



2020 Eastern Canadian Wheat

Production, Milling and Flour Quality

Paolo Santangelo
Grain Farmers of Ontario



2020-21 Eastern Canadian Wheat Quality

Key Highlights

Highest Eastern
Wheat Plantings
in Five Years

Over 90%
No. 1 & No. 2



Production 11%
above 5 year
average



Overview

- Highlight of growing regions in Eastern Canada
- Review of 2020 production in Eastern Canada
- Review of significant grading factors
- Wheat quality data, by class
- Flour quality data by class

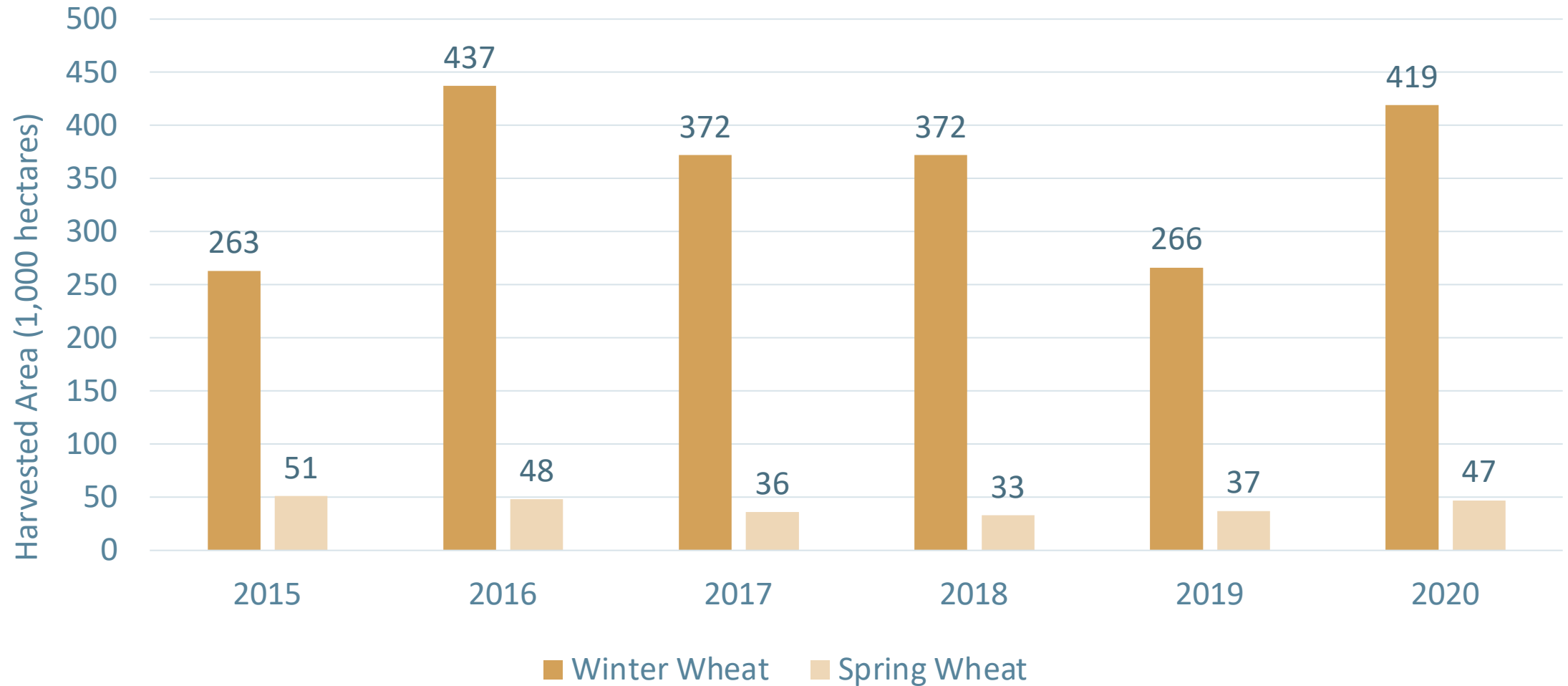


Growing Wheat in Ontario

- Surrounded by 1/5th of the world's fresh water
- Seasonal temperatures and nutrient rich soils
- Over 50% of Ontario's farm land is classified as high quality
- Annual precipitation 787 mm
- Latitude of southern Ontario, further south then Northern California

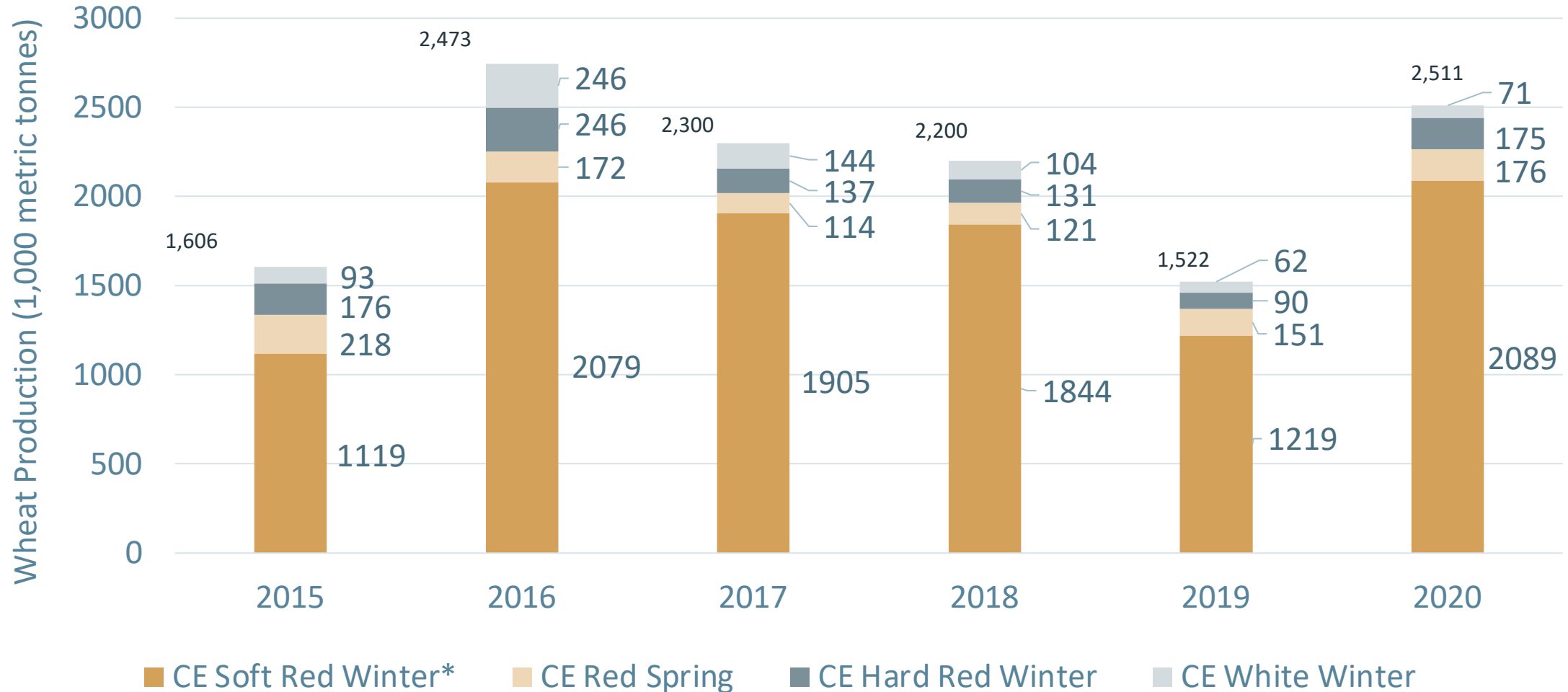


Wheat Plantings Highest in Five Years



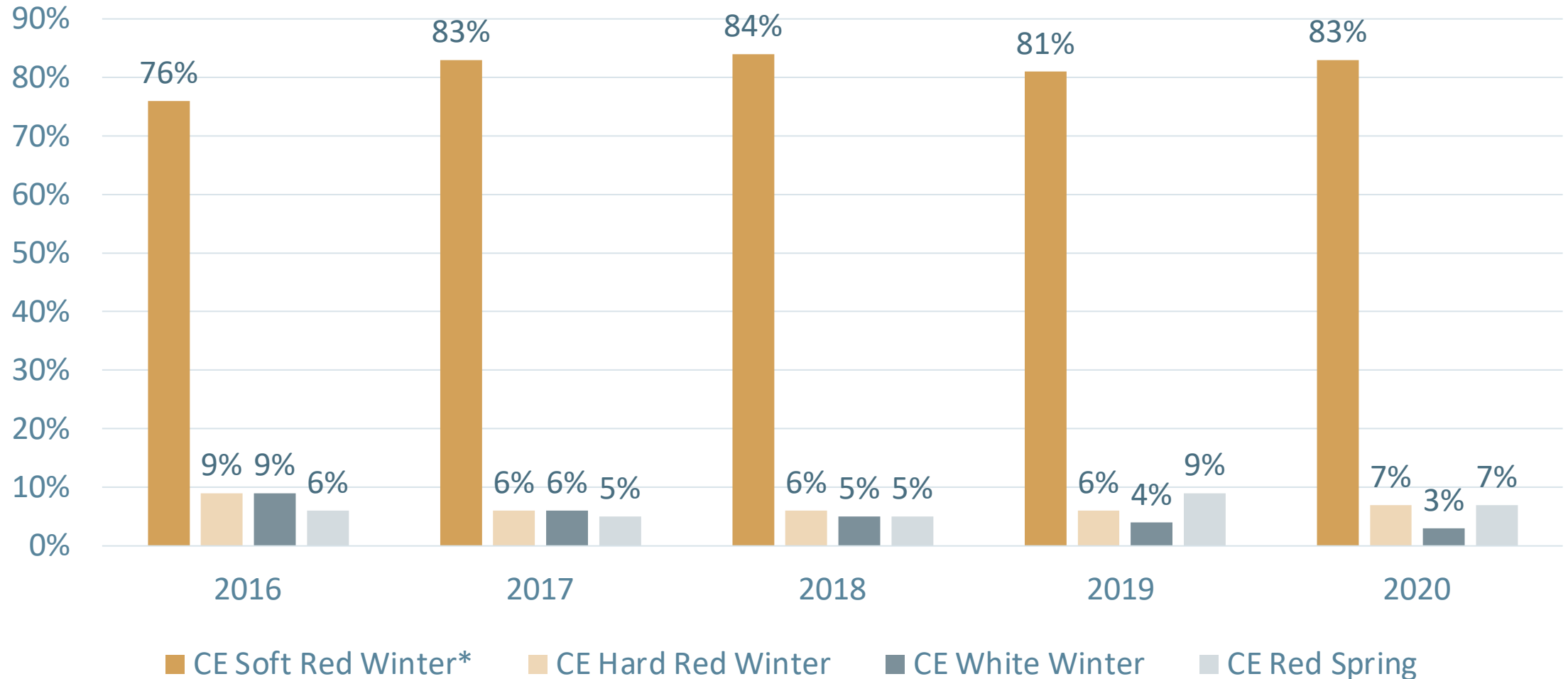
Total Wheat Production

11% Above 5 Year Average



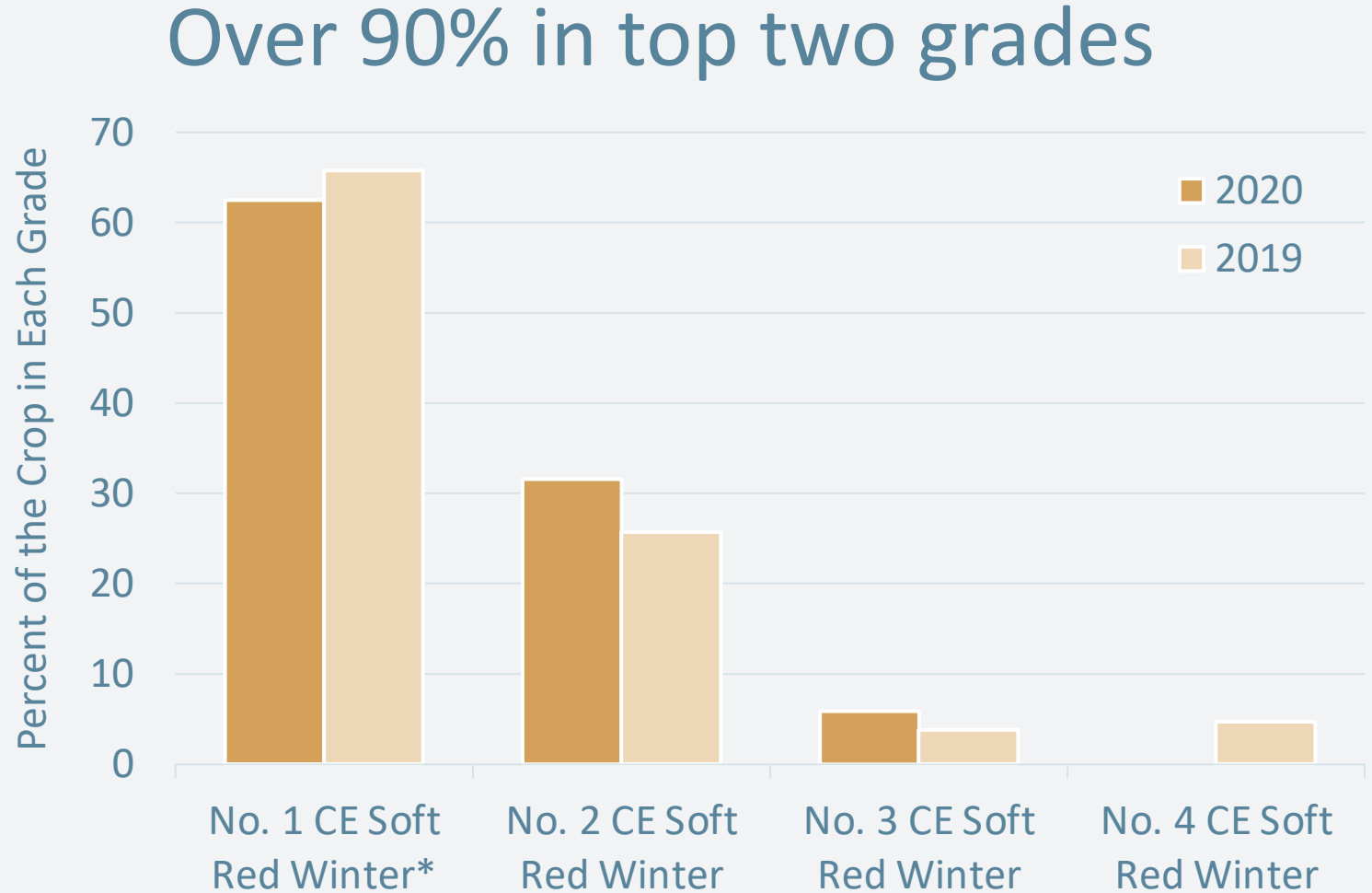
Canadian Eastern Soft Red Winter

Largest Class



Grade Breakdown – Soft Red Winter

- 290 Samples of CESRW graded
- Over 90% No. 1 and No. 2
- None downgraded due to fusarium damage



Soft Red Winter – Quality Overview

Good test weight; Low ash; Average protein; Falling Number over 350

Parameter	2020	2019
Test weight, kg/hL	78.0	78.0
1000 Kernel weight, g	32.3	34.4
Wheat ash (13.5 mb), %	1.40	1.44
Protein content (13.5% mb), %	9.5	9.7
Protein content (dmb), %	11.0	11.2
Falling Number, s	362	380

Soft Red Winter – Milling Outcomes

Good milling yield; Low ash content; Bright colour

Parameter	2020 Straight Grade	2019 Straight Grade
Milling yield, %	72.5	75.3
Milling yield (0.50% ash), %	77.5	77.8
Ash content, %	0.40	0.45
Minolta L*	92.6	91.2

Soft Red Winter – Flour Quality

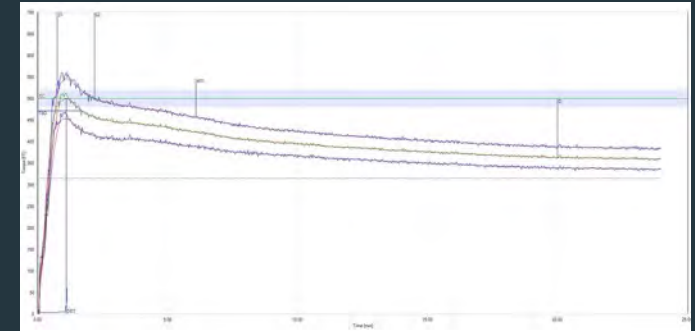
Good starch damage numbers; Amylograph peak viscosity re-enforces quality assessments

Parameter	2020 Straight Grade	2019 Straight Grade
Protein content, %	8.3	8.6
Protein loss, %	1.2	1.1
Amylograph peak viscosity, BU	807	692
Starch damage, UCD	16.1	16.3

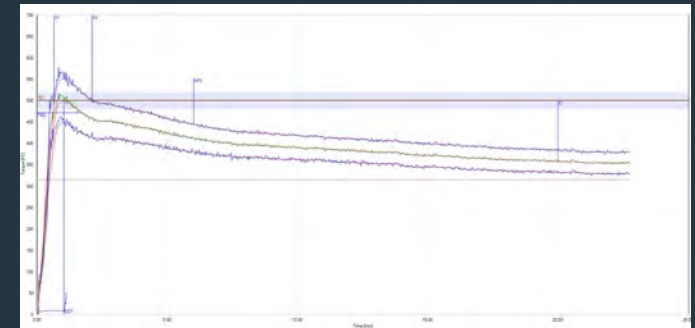
Soft Red Winter – Farinograph

Parameter	2020 Straight Grade	2019 Straight Grade
Absorption, %	50.6	51.3
DDT, min	1.1	1.1
Stability, min	2.1	2.2
MTI, BU	83	95

2020



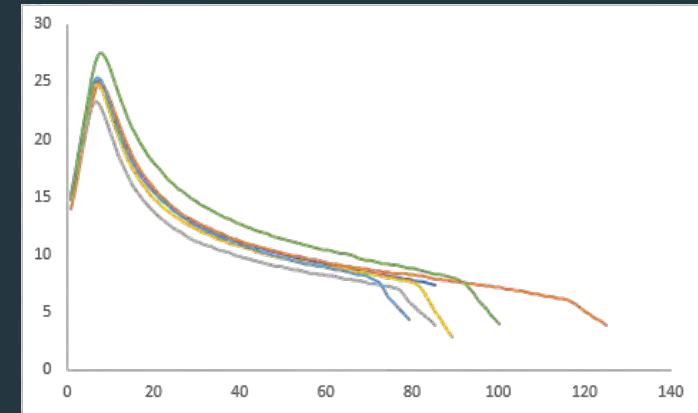
2019



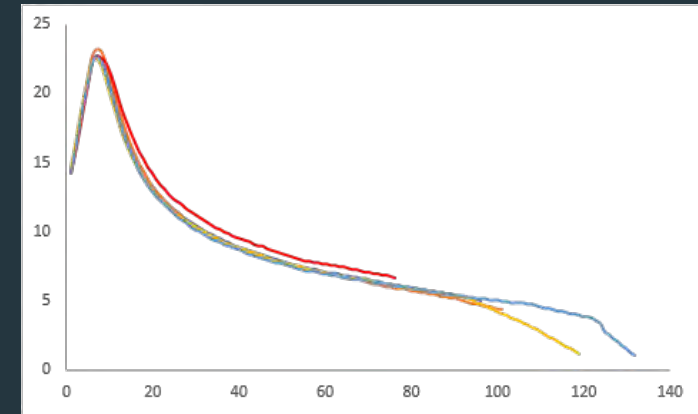
Soft Red Winter – Alveograph

Parameter	2020 Straight Grade	2019 Straight Grade
P, mm	28	25
L, mm	96	93
P/L	0.30	0.27
W, 10 ⁻⁴ J	77	61

2020



2019



Soft Red Winter – Solvent Retention Capacity

Parameter	2020 Straight Grade	2019 Straight Grade
Distilled water, %	52.0	53.0
Sucrose, %	99.2	99.1
Lactic acid, %	111.0	103.0
Sodium Carbonate, %	73.2	76.2

Soft Red Winter – Cookie Bake Results

Makes Great Cookies!

Parameter	2020 Straight Grade	2019 Straight Grade
Cookie width (w), mm	85.4	82.1
Cookie thickness (t), mm	10.0	9.3
w/t ratio	8.5	8.8
Cookie spread factor	85.4	88.3

2020-21 Eastern Canadian Wheat Quality

Key Highlights

Highest Eastern
Wheat Plantings
in Five Years

Over 90%
No. 1 & No. 2



Production 11%
above 5 year
average



CANADIAN
CEREALS

CanadianCereals.ca